

3D-Printed Panels for the PIL-Box

3D-printed panels:

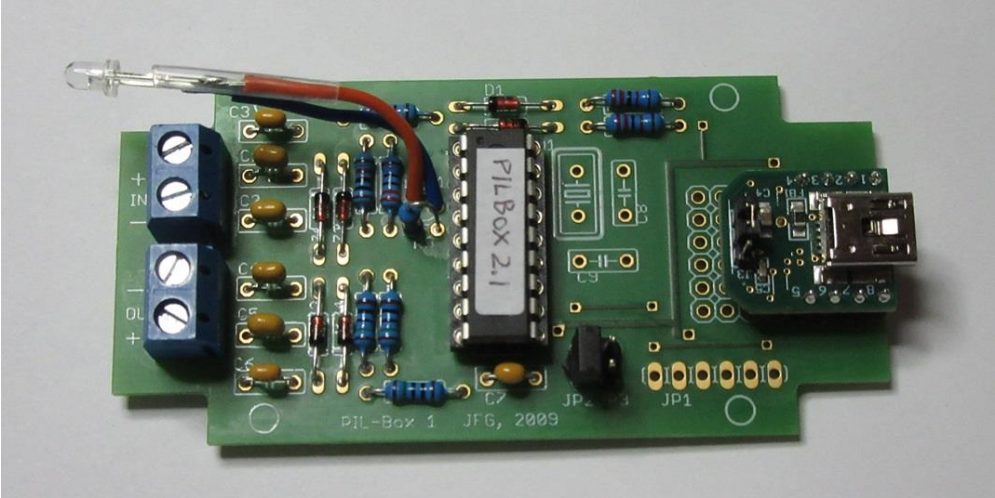


<https://www.printables.com/model/396270-pil-box-hp-il-to-usb-converter-enclosure-end-walls>

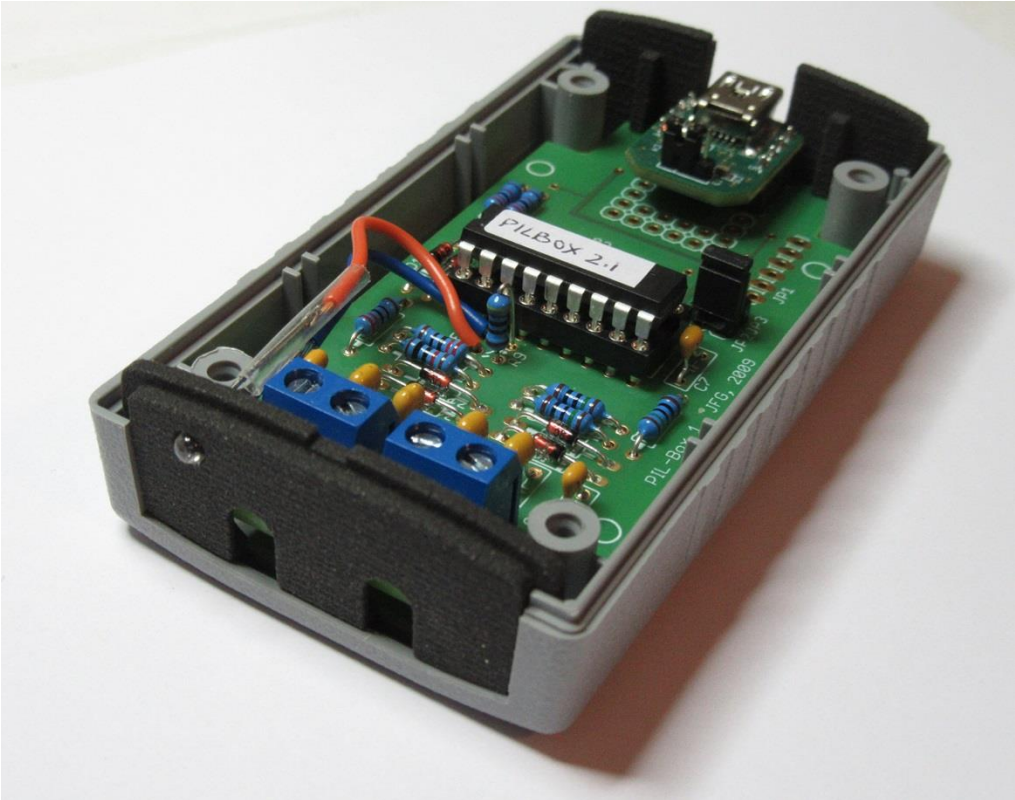
Panels installed in the PIL-Box:



Installation of the LED on the front panel:



Remember: the LED cathode (shortest lead) is connected to the pad close to IC1 (blue wire here)



A little drop of glue may be needed to keep the LED in place.